

## Data Sheet

## INFUSION TUBING CONNECTORS & VALVES

### Infusion tube fittings

#### DESCRIPTION

Infusion valves and fittings are available in several diameters and they are designed to be connected with different types of tubes used to control resin flow in the vacuum infusion process. The fittings can also be used to join the spiral tubes used as vacuum channels.

#### TECHNICAL DATA

##### Polypropylene fittings

Material type	Polypropylene
Maximum use temperature	90°C
Colour	Black

##### Polyacetal infusion valve

Material type	Polyacetal
Maximum use temperature	120°C
Colour	Black/Red

#### SIZES

Connector part numbers:

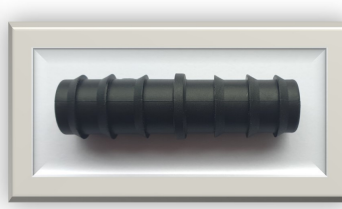
Tee	Elbow	Coupling	Infusion valve
PTF12	PLF12	PCF12	Infuvalve 12
PTF16	PLF16	PCF16	Infuvalve 16
PTF20	PLF20	PCF20	Infuvalve 20



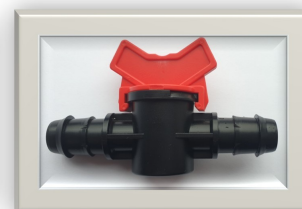
Tee



Elbow



Coupling



Infusion valve

Fitting size (mm)	Works with:
12	10mm I.D. PE Tube 10mm I.D. PVC fibre reinforced tube 8mm I.D. Sil-tube
16	14mm I.D. PE Tube 13mm I.D. PVC fibre reinforced tube 10mm I.D. Sil-tube
20	19mm I.D. PVC spiral reinforced tube 18mm I.D. PE tube

#### NOTES

- The maximum use temperature is dependent upon the duration at maximum temperature and is process specific, Airtech recommends testing prior to use.
- Other sizes available upon request. Minimum order quantity may apply.
- See separate data sheets for tubes.

Last updated : 2023-10-17

Catalogue position : [Resin infusion products](#)