

Data Sheet

GREENFLOW 185

High drapable knitted resin distribution medium

■ DESCRIPTION

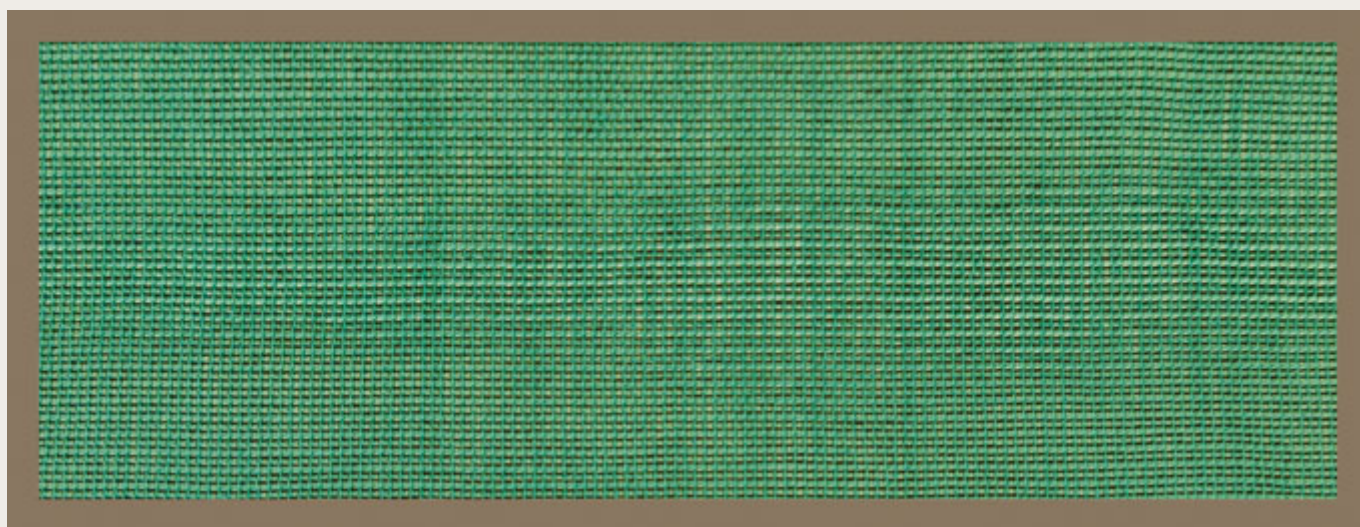
Greenflow 185 is designed to assist resin flow through the part during the vacuum assisted resin infusion process. Our resin flow medium works well with polyester, vinylester and epoxy resins. This product is a knitted flow medium and is highly drapable.

■ TECHNICAL DATA

Material type	HDPE
Colour	Green
Configuration of net	Knitted
Maximum use temperature	125 °C
Mesh weight	185 g/m ²

■ SIZES

Thickness	Width	Length
1 mm	3,6 m	100 m



■ NOTES

- > Other sizes available upon request.
- > Greenflow 185 does not roll up at the end when cut.

Last updated : 2010-02-15

Catalogue position : [Resin infusion products](#)